



Wireless E9-1-1 Implementation Plan

**CPE, CAD and GIS Requirements
for Wireless E9-1-1**

January 24-25, 2002



CPE, CAD & GIS Requirements

What is CPE, CAD & GIS ?



What will be required for each ?

What do you need to do ?



Wireless E9-1-1 Implementation Plan – CPE, CAD & GIS Requirements



What is CPE, CAD & GIS

- **CPE**

- Typically referred to as 9-1-1 CPE
- Includes

- 9-1-1 ANI/ALI Controller
- ANI/ALI Display (IWS or other)
- Numerous interfaces to other systems/applications



- **CAD**

- Computer Aided Dispatch
- Includes

- Map, Mobile and RMS
- Numerous Interfaces to other systems/applications



What is CPE, CAD & GIS

- **GIS**

- Graphical Information System

- Typically includes

- Map Data
- Map Management Tools
- Map Display



What will be required ... CPE

- **ANI/ALI Controller**
 - 10/20 Digit ANI
 - Location Information
 - New ALI Database output/input
 - New CAD output
 - New Map output
 - New Call Detail Record output



What will be required ... CPE

- **ANI/ALI Controller**

Ability to

- Support simultaneous solutions
 - CAS, NCAS and hybrids
- Support multiple LDT solutions
 - Handset or network based, or hybrids
- Interface with “New” network protocols
 - ISDN, IP Telephony, others?



Wireless E9-1-1 Implementation Plan – CPE, CAD & GIS Requirements



What will be required ... CPE

- Alternate data collection/reception methods
 - Non-traditional databases
 - Multiple databases
 - Automatic queries dependant upon call type
 - Trunk group, ANI or ID Digit
 - PSAP dependant selective look-up



What will be required ... CPE

Call taker features



Ability to

- Differentiate the various numbers presented
- Manually query the LDT
- Manually query different databases
- See calls before they are answered
- Call back with ease



Wireless E9-1-1 Implementation Plan – CPE, CAD & GIS Requirements

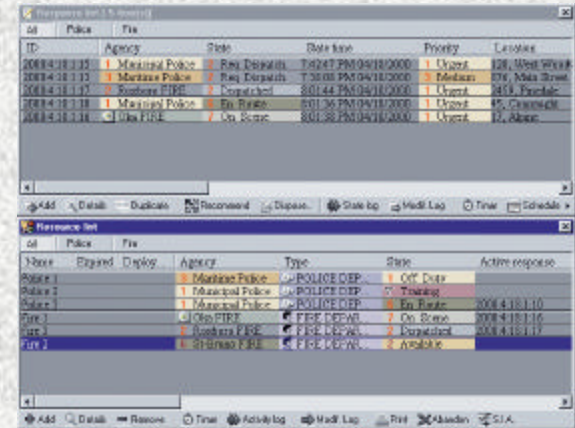


What will be required ... CAD

- **CAD Requirements**

- Ability to

- Accept new ALI interface
- Receive additional information from 9-1-1 CPE
- Parse ALI information
- Differentiate the various number presented



What will be required ... GIS

- **Map Data**

- Determine

- If you need a map
- Accuracy required
- Who will maintain

- Need for a base map

- Remember – Garbage In ✍ Garbage Out



What will be required ... GIS

- **Map Management Tools**

- Ability to

- Modify existing data
- Add additional information
- Import additional information/layers
- Import various formats of data

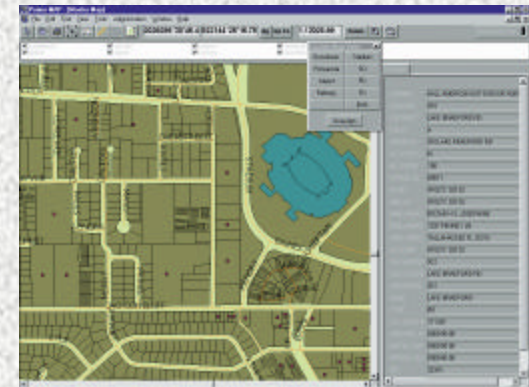
- Remember – Garbage In ✍ Garbage Out



What will be required ... GIS

- **Map Display**

- Interactive with 9-1-1 CPE
- Integrated with 9-1-1 display, IWS, CAD or Stand alone
- Shared or separate screen
- Ability to support different GIS data formats
- Configurable to users needs



What will be required ... GIS

- **Map User Features**

- Ability to

- See all PSAP's calls
- See calls prior to answer
- Access detailed call location information
- Zoom and pan
- Access multiple layers of information
- Search for locations

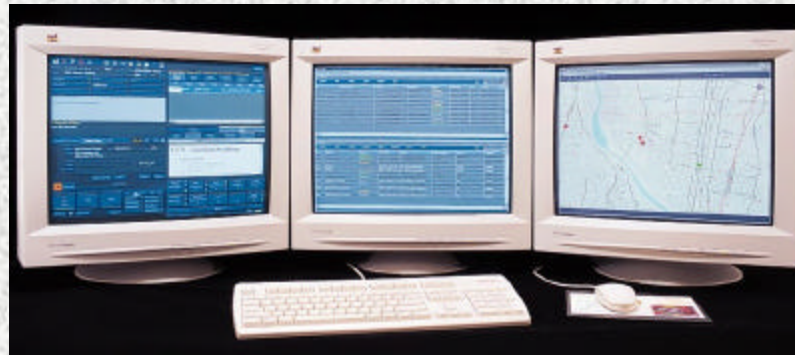


Wireless E9-1-1 Implementation Plan – CPE, CAD & GIS Requirements



Finally ... what you must have

- Delivery of wireless location information
- Equipment that meets the requirements
- Funding



Wireless E9-1-1 Implementation Plan – CPE, CAD & GIS Requirements



Any Questions ?

Phil Rotheram
Positron Public Safety Systems Corp.



protheram@positron911.com



www.positron911.com



877-4-911-iws

Thanks for your time ...



Wireless E9-1-1 Implementation Plan – CPE, CAD & GIS Requirements

