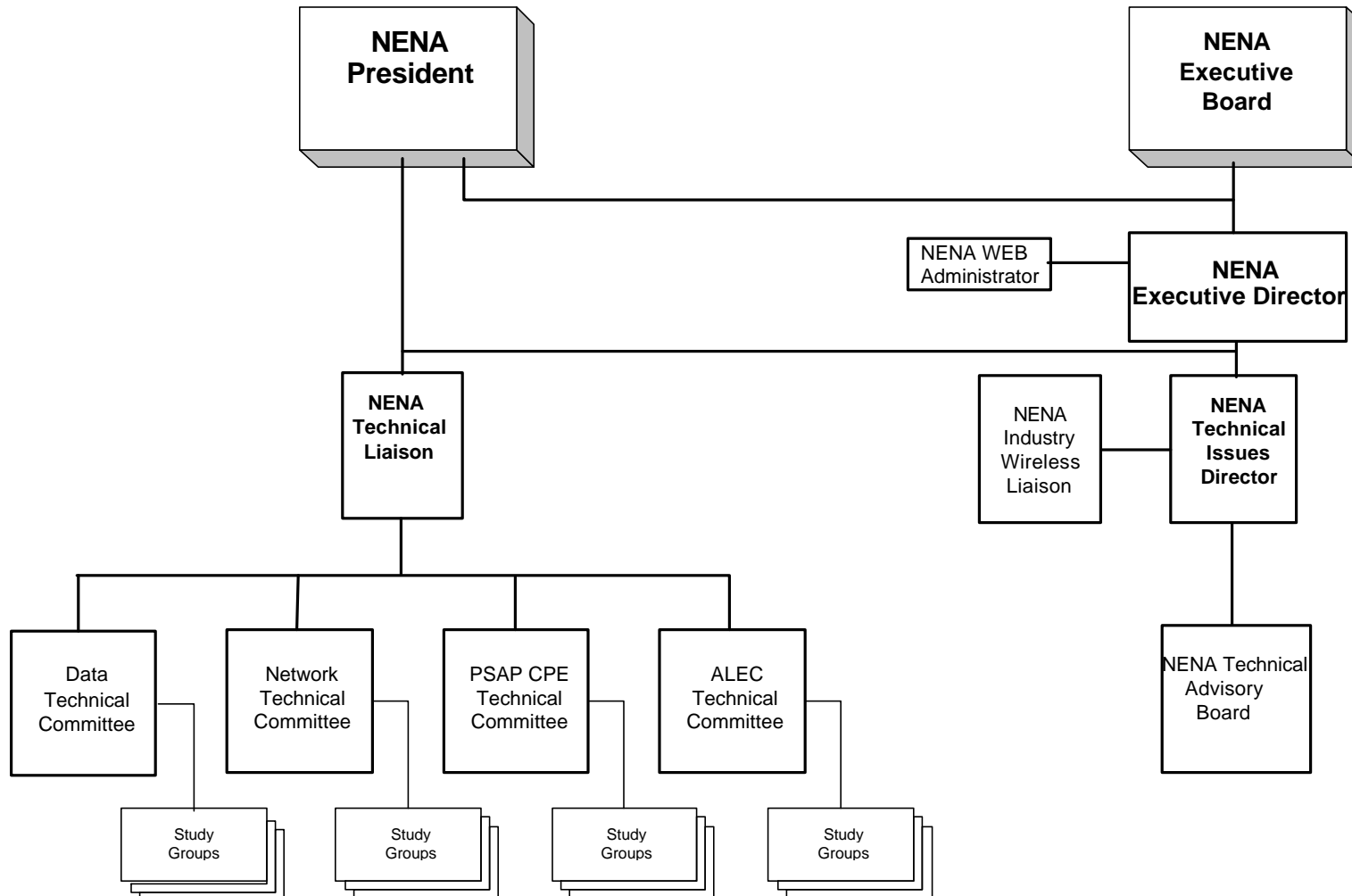
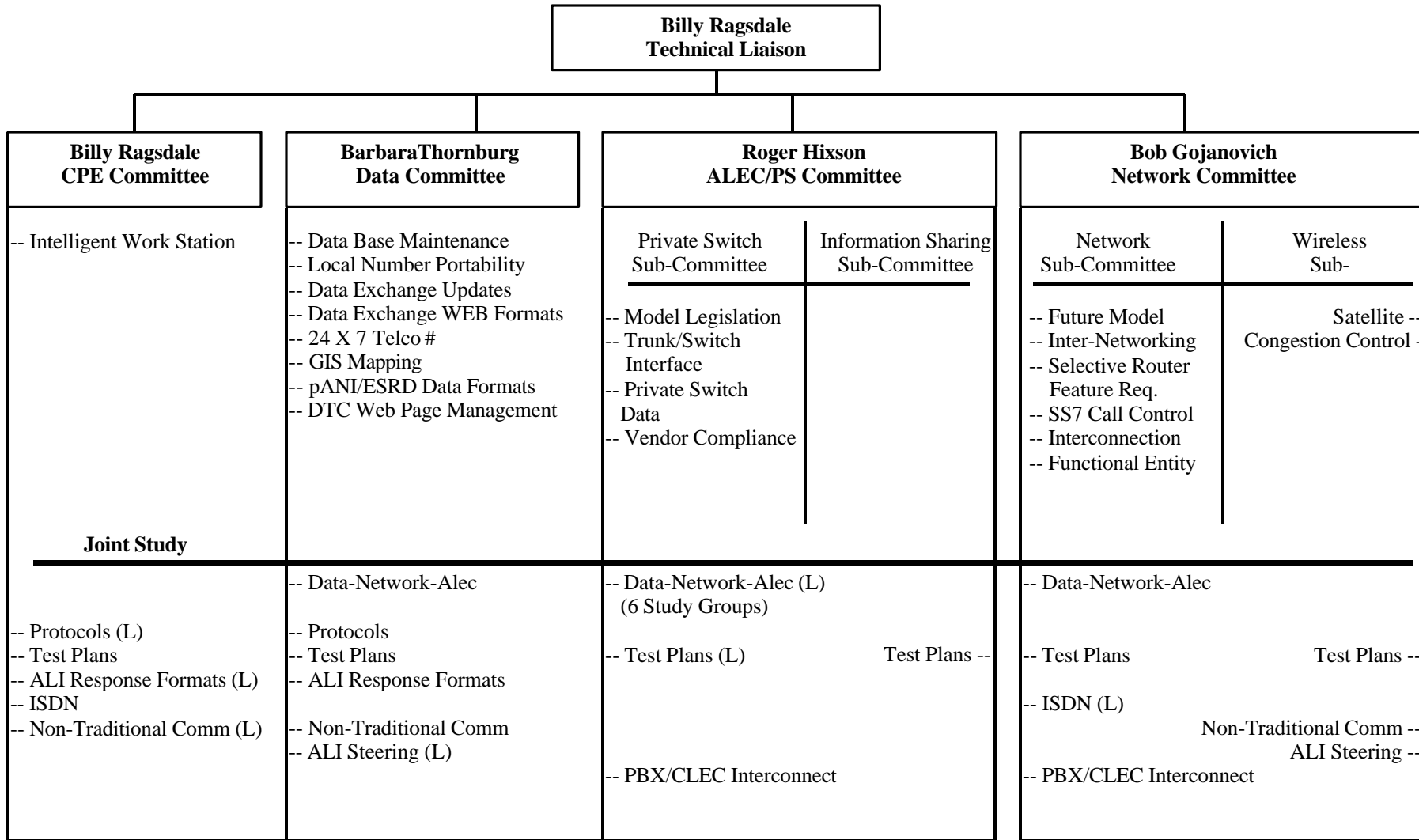


NENA Technical Committee Organization



NENA Technical Committee Structure



(L) = Lead Committee

Updated Sept. 1999

ATTACHMENT ASSOCIATED WITH TECHNICAL COMMITTEE STRUCTURE
Updated Sept. 1999

- **Technical Liaison, Billy Ragsdale 404-329-4146**
- **CPE Committee, Billy Ragsdale 404-329-4146**
 - Intelligent Work Station, Philip Rotheram 916-972-4911
- **Data Committee, Barb Thornburg 612-553-7879**
 - Data Base Maintenance, Delaine Arnold 813-899-1072
 - Local Number Portability, Barb Thornburg 612-553-7879
 - Data Exchange Updates, Pat Raulerson 303-581-5646
 - 24 X 7 Telco #, Kim Leigh 612-307-0992, Bill Marczak 404-529-5142
 - GIS Mapping, Erica Kind 802-828-4911, Bob White 207-287-8087
 - pANI/ESRD Data Formats, (TBD)
 - DTC Web Page Management, Tom Weeks 303-697-2357
- **ALEC/PS Committee, Roger Hixson 614-223-7687**
 - **Private Switch, Tom Sikorski 317-265-6807**
 - Model Legislation, Mary Boyd 915-356-2121
 - Trunking/Switch Interface, John McAlpin 612-617-2741
 - Private Switch Data, Diane Wiley 727-735-9281
 - Vendor Compliance, Bob Oening 253-512-7011
 - **Information Sharing, Norene Lewis 510-867-5757**
- **Network Committee, Bob Gojanovich 732-743-6366**
 - **Network, Dick Kahn 925-824-5388**
 - Future Model, Russ Russell 817-684-1911
 - Inter-Networking, Wes Tilley 919-991-7103
 - Selective Router Feature Requirements, Paul Stoffels 708-229-0389
 - SS7 Call Control, Debbie Guyton 732-758-5220

- Interconnection, (TBD)
 - Functional Entity, Debbie Guyton 732-758-5220
- **Wireless, Jeff Crolick 813-985-3581**
 - Satellite, (TBD)
 - Congestion Control, Jim McGarrah 404-249-0370
- **Joint Study Groups**
 - Data-Network-ALEC, Roger Hixson 614-223-7687
 - Default Call Handling, Thom Selleck 718-355-5730
 - ESCO Application, Bernard Brabant 514-455-8233
 - Operator Services, John Garner 253-512-7011
 - Surcharge Application, Judy Graham 303-566-5885
 - Number Conservation, joint effort, contact Roger Hixson
 - Protocols, Luc Bouchard 925-671-1068
 - Test Plans, John Schoppenhorst 972-718-7595
 - ALI Response Formats, Luc Bouchard 925-671-1068, Gene Dahl 612-307-0550
 - ISDN, Debbie Guyton 732-758-5220
 - Non-Traditional Communications, Tony Busam 503-585-1490
 - ALI Steering, Larry Ciesla 630-224-6747
 - PBX/ALEC Interconnection, (TBD)